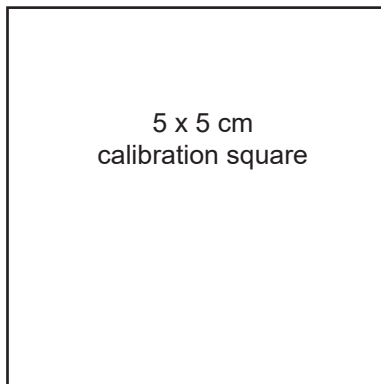


Flower bin

The print at home pattern is designed to print on A4 sized paper. In your printer settings, uncheck 'scale to size' or check 'actual size.' Print page 2 first and measure to ensure that the 5 cm x 5 cm

If the square isn't the correct size. If not, adjust your printer settings and try again.

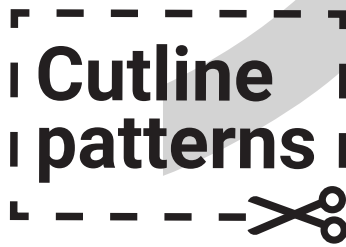




4 Cardboard top



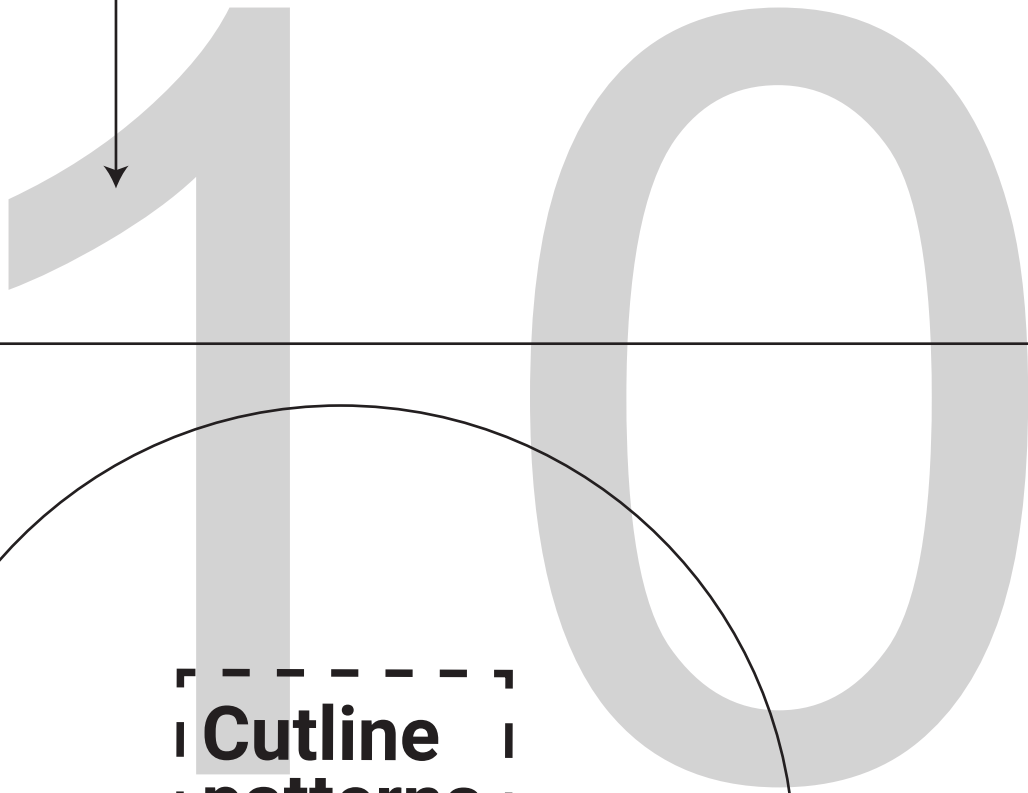
Grainline



1 Fabric
✂ X1

Fold line

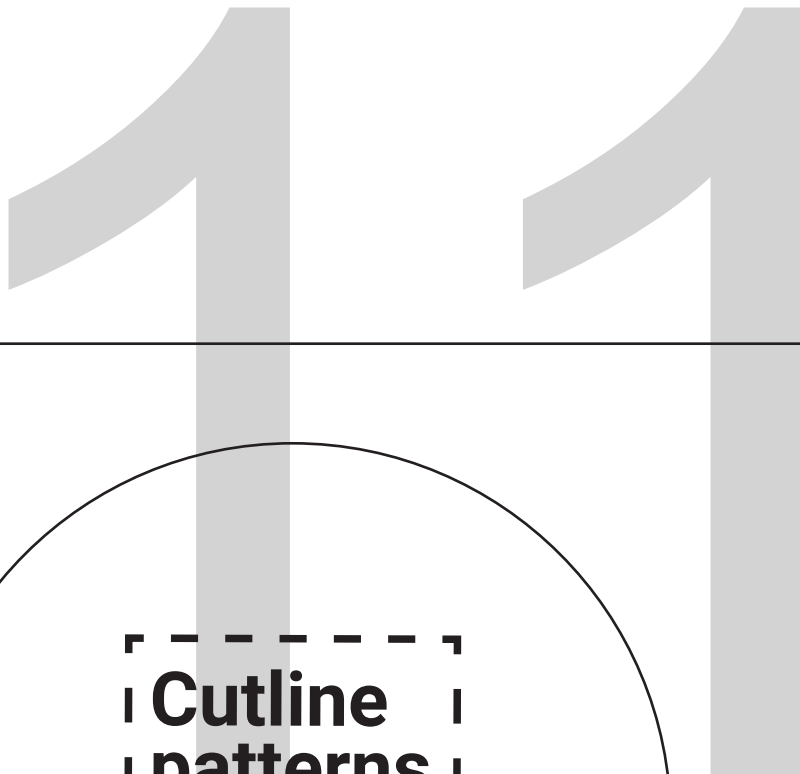




**Cutline
patterns**



2 Fabric base
✂ X2



**Cutline
patterns**



3 Cardboard base
and padding

 X2