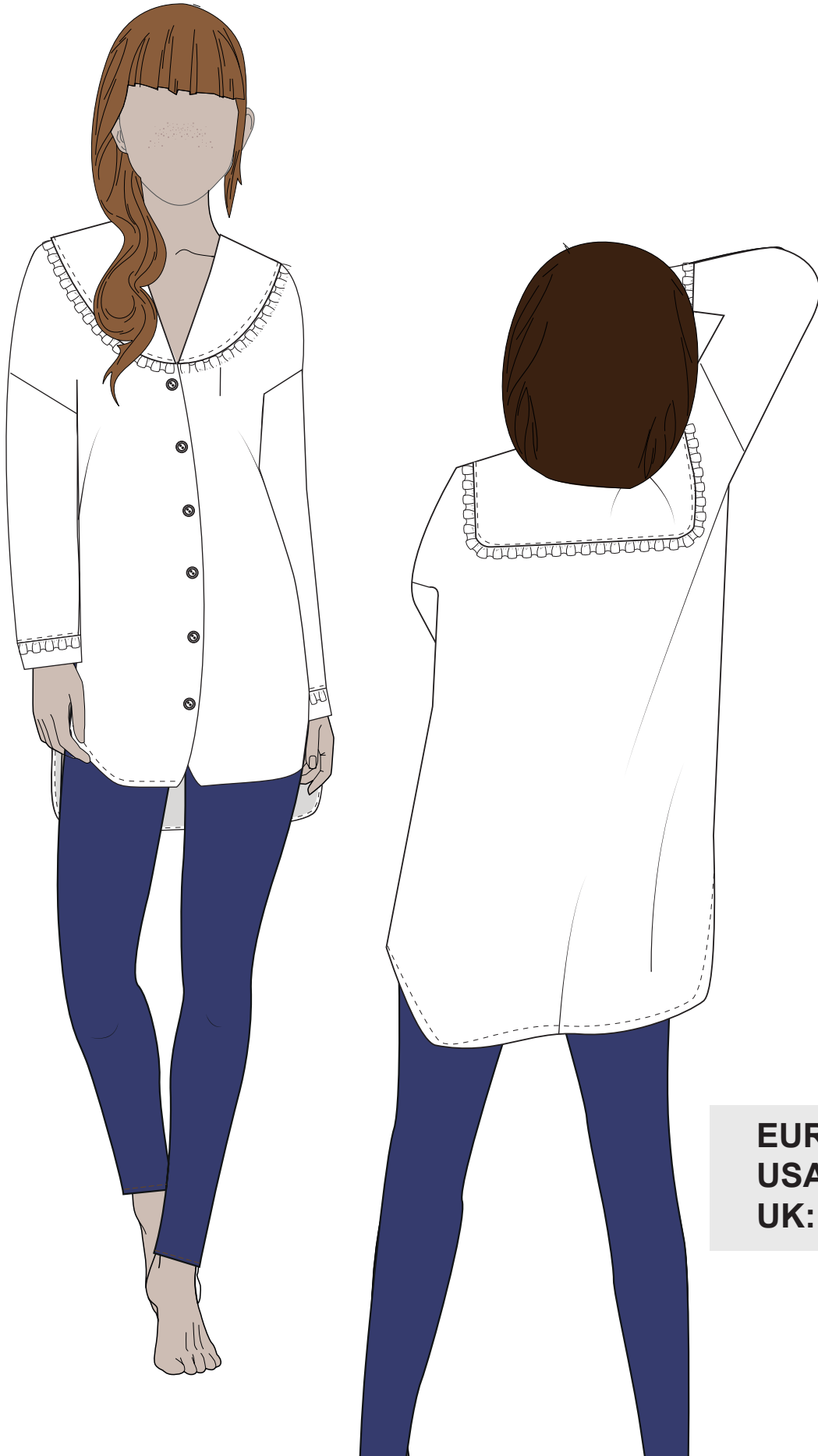


---  
| Cutline |  
| patterns |  
- - - - - ✂

# Daisy shirt blouse



|             |              |
|-------------|--------------|
| <b>EUR:</b> | <b>32-52</b> |
| <b>USA:</b> | <b>0-20</b>  |
| <b>UK:</b>  | <b>4-24</b>  |

## DESCRIPTION

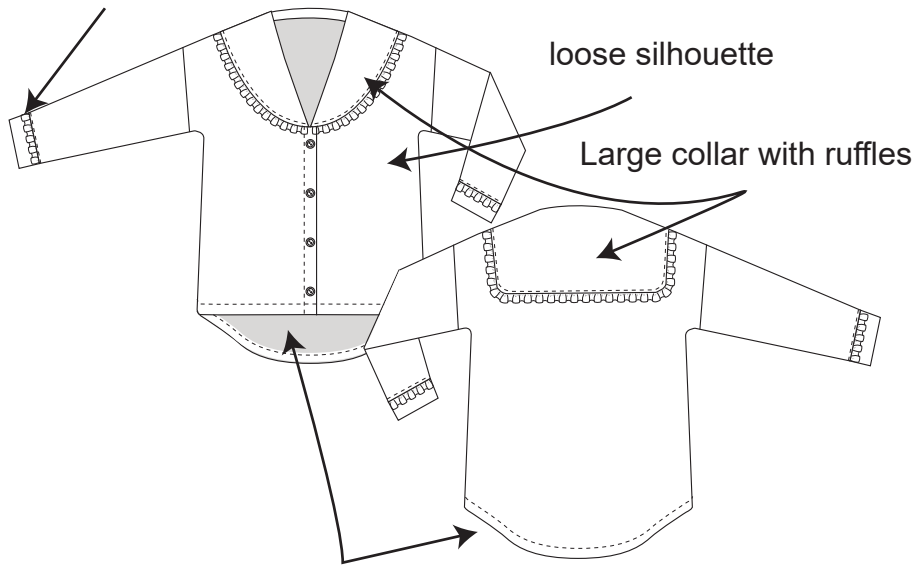
With a loose silhouette and beautiful details such as ruffles and a large collar, the Daisy shirt blouse is ultimate chic and light attire

Option A is short with an asymmetrical bottom edge.  
Option B has the length of a tunic with a longer back.

On the blog you will also find instructions for lengthen or shorten the sleeves, so they fit your armelength. See more [here](#).

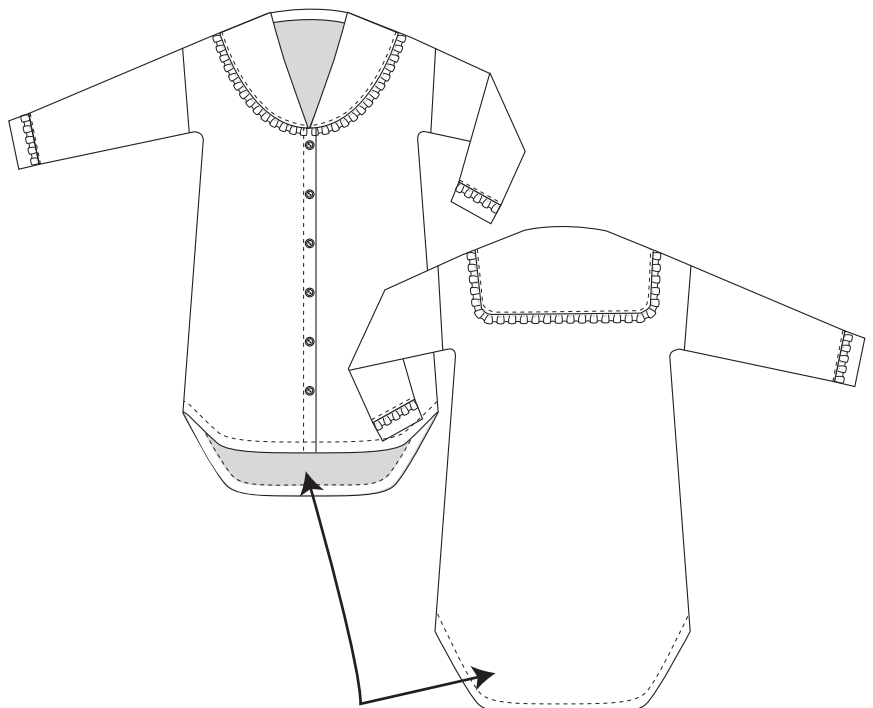
### Option A

Cuff with ruffles



Short length with an asymmetrical bottom edge

### Option B



Length like a tunic with a longer back

MEASUREMENT CHART - INCHES

|       |       |       |       |       |       |       |       |       |       |       |       |
|-------|-------|-------|-------|-------|-------|-------|-------|-------|-------|-------|-------|
| EUR   | 32    | 34    | 36    | 38    | 40    | 42    | 44    | 46    | 48    | 50    | 52    |
| USA   | 0     | 2     | 4     | 6     | 8     | 10    | 12    | 14    | 16    | 18    | 20    |
| UK    | 4     | 6     | 8     | 10    | 12    | 14    | 16    | 18    | 20    | 22    | 24    |
| Bust  | 29.52 | 31.49 | 33.07 | 34.64 | 36.22 | 37.79 | 39.37 | 40.94 | 43.30 | 45.66 | 48.03 |
| Waist | 23.62 | 25.19 | 26.77 | 28.34 | 29.92 | 33.07 | 33.07 | 34.64 | 37.00 | 39.37 | 41.73 |
| Hip   | 33.07 | 34.64 | 36.22 | 37.79 | 39.37 | 40.94 | 42.51 | 44.09 | 46.06 | 48.03 | 50.00 |

MEASUREMENT CHART - CM

|       |    |    |    |    |     |     |     |     |     |     |     |
|-------|----|----|----|----|-----|-----|-----|-----|-----|-----|-----|
| EUR   | 32 | 34 | 36 | 38 | 40  | 42  | 44  | 46  | 48  | 50  | 52  |
| USA   | 0  | 2  | 4  | 6  | 8   | 10  | 12  | 14  | 16  | 18  | 20  |
| UK    | 4  | 6  | 8  | 10 | 12  | 14  | 16  | 18  | 20  | 22  | 24  |
| Bust  | 75 | 80 | 84 | 88 | 92  | 96  | 100 | 104 | 110 | 116 | 122 |
| Waist | 60 | 64 | 68 | 72 | 76  | 80  | 84  | 88  | 94  | 100 | 106 |
| Hip   | 84 | 88 | 92 | 96 | 100 | 104 | 108 | 112 | 117 | 122 | 127 |

FINISHED GARMENT MEASUREMENT - INCHES

|                            |       |       |       |       |       |       |       |       |       |       |       |
|----------------------------|-------|-------|-------|-------|-------|-------|-------|-------|-------|-------|-------|
| EUR                        | 32    | 34    | 36    | 38    | 40    | 42    | 44    | 46    | 48    | 50    | 52    |
| USA                        | 0     | 2     | 4     | 6     | 8     | 10    | 12    | 14    | 16    | 18    | 20    |
| UK                         | 4     | 6     | 8     | 10    | 12    | 14    | 16    | 18    | 20    | 22    | 24    |
| Bust                       | 37.40 | 39.37 | 40.94 | 42.12 | 43.50 | 44.88 | 46.25 | 48.22 | 50.19 | 52.75 | 55.31 |
| Waist                      | 37.40 | 39.56 | 41.14 | 42.32 | 43.70 | 45.27 | 46.65 | 48.62 | 50.78 | 53.34 | 55.90 |
| Hip                        | 38.97 | 41.14 | 42.71 | 43.89 | 45.47 | 46.85 | 48.42 | 50.39 | 52.36 | 54.92 | 55.90 |
| Shoulder seam              | 7.87  | 8.07  | 8.26  | 8.46  | 8.66  | 9.05  | 9.25  | 9.64  | 10.03 | 10.43 | 10.82 |
| Length mid back - option A | 27.16 | 27.55 | 27.38 | 28.22 | 28.50 | 29.05 | 29.33 | 29.72 | 30.11 | 30.51 | 30.90 |
| Length mid back - option B | 35.03 | 35.43 | 35.70 | 36.10 | 36.49 | 36.92 | 37.20 | 37.59 | 37.99 | 38.38 | 38.77 |

FINISHED GARMENT MEASUREMENT - CM

|                            |    |       |       |       |       |      |       |       |       |       |       |
|----------------------------|----|-------|-------|-------|-------|------|-------|-------|-------|-------|-------|
| EUR                        | 32 | 34    | 36    | 38    | 40    | 42   | 44    | 46    | 48    | 50    | 52    |
| USA                        | 0  | 2     | 4     | 6     | 8     | 10   | 12    | 14    | 16    | 18    | 20    |
| UK                         | 4  | 6     | 8     | 10    | 12    | 14   | 16    | 18    | 20    | 22    | 24    |
| Bust                       | 95 | 100   | 104   | 107   | 110,5 | 114  | 117,5 | 122,5 | 127,5 | 134   | 140,5 |
| Waist                      | 95 | 100,5 | 104,5 | 107,5 | 111   | 115  | 118,5 | 123,5 | 129   | 135,5 | 142   |
| Hip                        | 99 | 104,5 | 108,5 | 111,5 | 115,5 | 119  | 123   | 128   | 133   | 139,5 | 142   |
| Shoulder seam              | 20 | 20,5  | 21    | 21,5  | 22    | 23   | 23,5  | 24,5  | 25,5  | 26,5  | 27,5  |
| Length mid back - option A | 69 | 70    | 70,7  | 71,7  | 72,4  | 73,8 | 74,5  | 75,5  | 76,5  | 77,5  | 78,5  |
| Length mid back - option B | 89 | 90    | 90,7  | 91,7  | 92,7  | 93,8 | 94,5  | 95,5  | 96,5  | 97,5  | 98,5  |

## RECOMMENDED FABRIC

Light to medium woven fabric such as poplin, cotton, silk, and rayon

## SHOPPING LIST

- Fabric (see info under fabric needed )
- Buttons:
  - Blouse:
    - Size 32-40 - 4 buttons
    - Size 42-52 - 5 buttons
  - Tunic:
    - Size 32-40 - 6 buttons
    - Size 42-52 - 7 buttons
- Thread that matches the fabric
- Interfacing - weight 30 gr per meter (see info under interfacing needed)

## FABRIC NEEDED

### Option A - INCHES

|                    |       |       |        |        |        |        |        |        |        |        |        |
|--------------------|-------|-------|--------|--------|--------|--------|--------|--------|--------|--------|--------|
| EUR                | 32    | 34    | 36     | 38     | 40     | 42     | 44     | 46     | 48     | 50     | 52     |
| USA                | 0     | 2     | 4      | 6      | 8      | 10     | 12     | 14     | 16     | 18     | 20     |
| UK                 | 4     | 6     | 8      | 10     | 12     | 14     | 16     | 18     | 20     | 22     | 24     |
| Fabric width 55,11 | 78.74 | 78.74 | 82.67  | 82.67  | 86.61  | 86.61  | 94.48  | 98.42  | 98.42  | 110.23 | 114.17 |
| Fabric width 45,27 | 96.45 | 96.45 | 102.36 | 102.36 | 110.23 | 110.23 | 112.20 | 112.20 | 114.17 | 116.14 | 118.11 |

### Option A - CM

|                  |     |     |     |     |     |     |     |     |     |     |     |
|------------------|-----|-----|-----|-----|-----|-----|-----|-----|-----|-----|-----|
| EUR              | 32  | 34  | 36  | 38  | 40  | 42  | 44  | 46  | 48  | 50  | 52  |
| USA              | 0   | 2   | 4   | 6   | 8   | 10  | 12  | 14  | 16  | 18  | 20  |
| UK               | 4   | 6   | 8   | 10  | 12  | 14  | 16  | 18  | 20  | 22  | 24  |
| Fabric width 140 | 200 | 200 | 210 | 210 | 220 | 220 | 240 | 250 | 250 | 280 | 290 |
| Fabric width 115 | 245 | 245 | 260 | 260 | 280 | 280 | 285 | 285 | 290 | 295 | 300 |

### Option B - INCHES

|                    |        |        |        |        |        |        |        |        |        |        |        |
|--------------------|--------|--------|--------|--------|--------|--------|--------|--------|--------|--------|--------|
| EUR                | 32     | 34     | 36     | 38     | 40     | 42     | 44     | 46     | 48     | 50     | 52     |
| USA                | 0      | 2      | 4      | 6      | 8      | 10     | 12     | 14     | 16     | 18     | 20     |
| UK                 | 4      | 6      | 8      | 10     | 12     | 14     | 16     | 18     | 20     | 22     | 24     |
| Fabric width 55,11 | 86.61  | 86.61  | 90.55  | 90.55  | 94.48  | 94.48  | 100.39 | 100.39 | 112.20 | 125.98 | 125.98 |
| Fabric width 45,27 | 114.17 | 114.17 | 118.11 | 118.11 | 125.98 | 125.98 | 127.95 | 127.95 | 129.92 | 131.88 | 133.85 |

### Option B - CM

|                  |     |     |     |     |     |     |     |     |     |     |     |
|------------------|-----|-----|-----|-----|-----|-----|-----|-----|-----|-----|-----|
| EUR              | 32  | 34  | 36  | 38  | 40  | 42  | 44  | 46  | 48  | 50  | 52  |
| USA              | 0   | 2   | 4   | 6   | 8   | 10  | 12  | 14  | 16  | 18  | 20  |
| UK               | 4   | 6   | 8   | 10  | 12  | 14  | 16  | 18  | 20  | 22  | 24  |
| Fabric width 140 | 220 | 220 | 230 | 230 | 240 | 240 | 255 | 255 | 285 | 320 | 320 |
| Fabric width 115 | 290 | 290 | 300 | 300 | 320 | 320 | 325 | 325 | 330 | 335 | 340 |